

FR8003

Winder Installation Manual



Note: The document is only available for winder FR8003 .

CONTENTS

1. Unpacking List	1
2. Installation Steps	2
3. Wires Connecting	5
4. Sensor Installation	6

1. Unpacking List



Roller Assembly



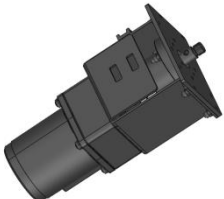
Film Guide Roll Assembly



Rotating Fork Assembly



Supporting Bar



Motor



Machine Mounting Base



Bracket Base



Machine Feet 2



Machine Feet 1

Assembly View



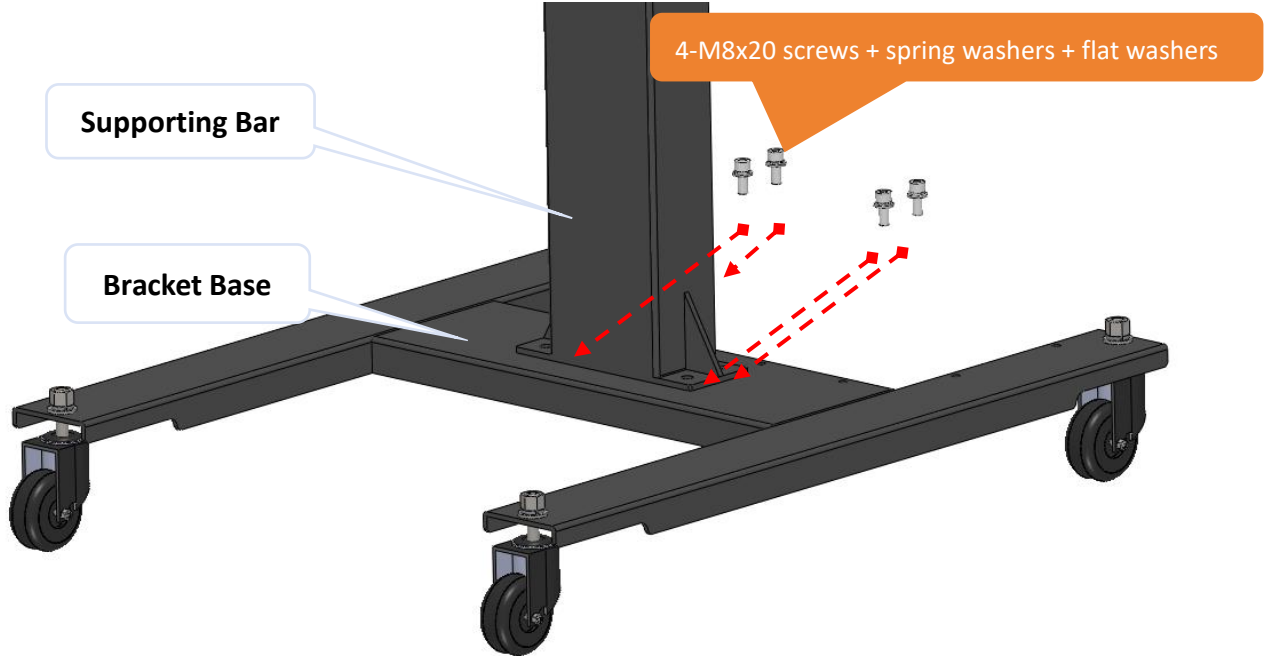
2. Installation Steps

Step 1: Supporting Bar Installation

Place the Bracket Base on the floor and brake the wheels to lock the position.

Place the Supporting Bar on the Bracket Base and align the holes.

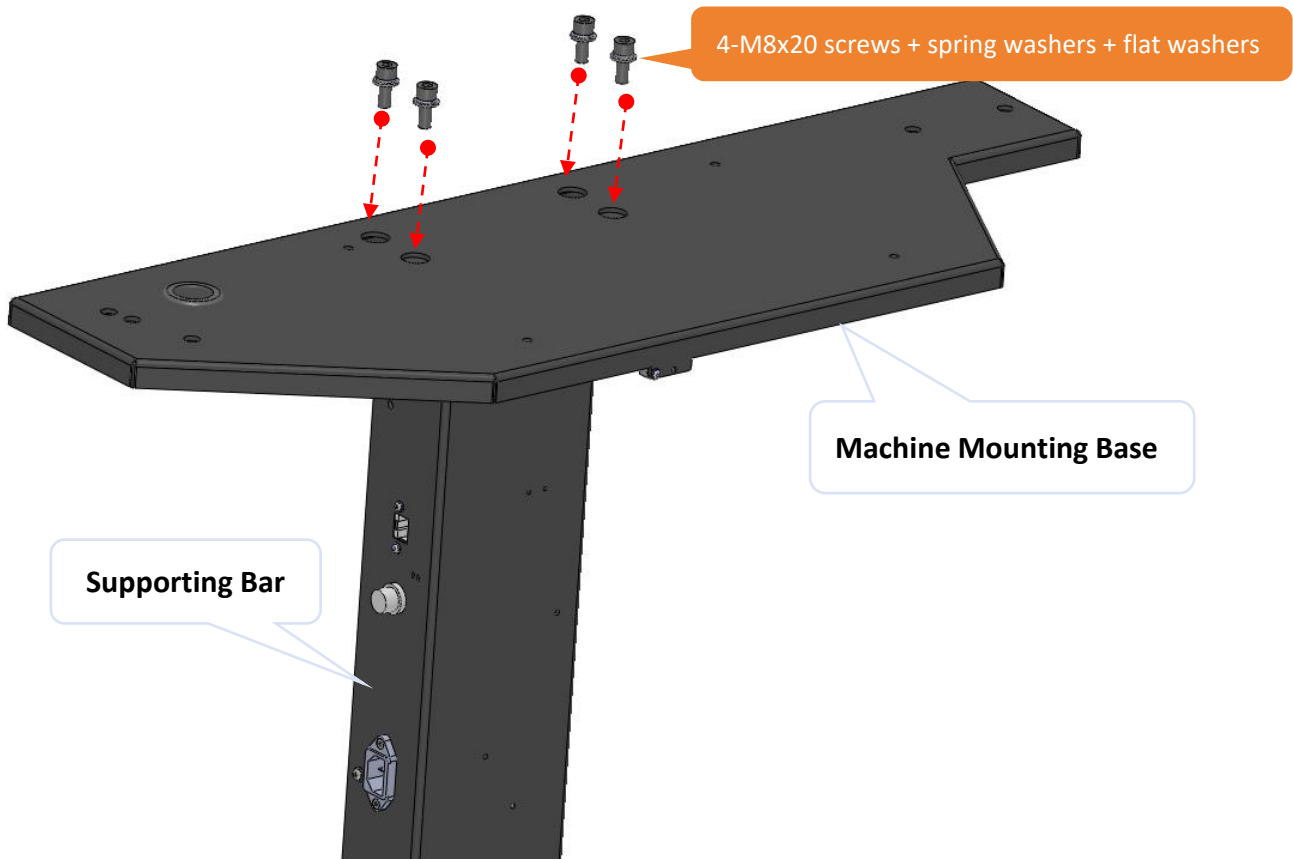
Install the parts using four M8x20 screws, spring washers and flat washers.



Step 2: Machine Mounting Base Installation

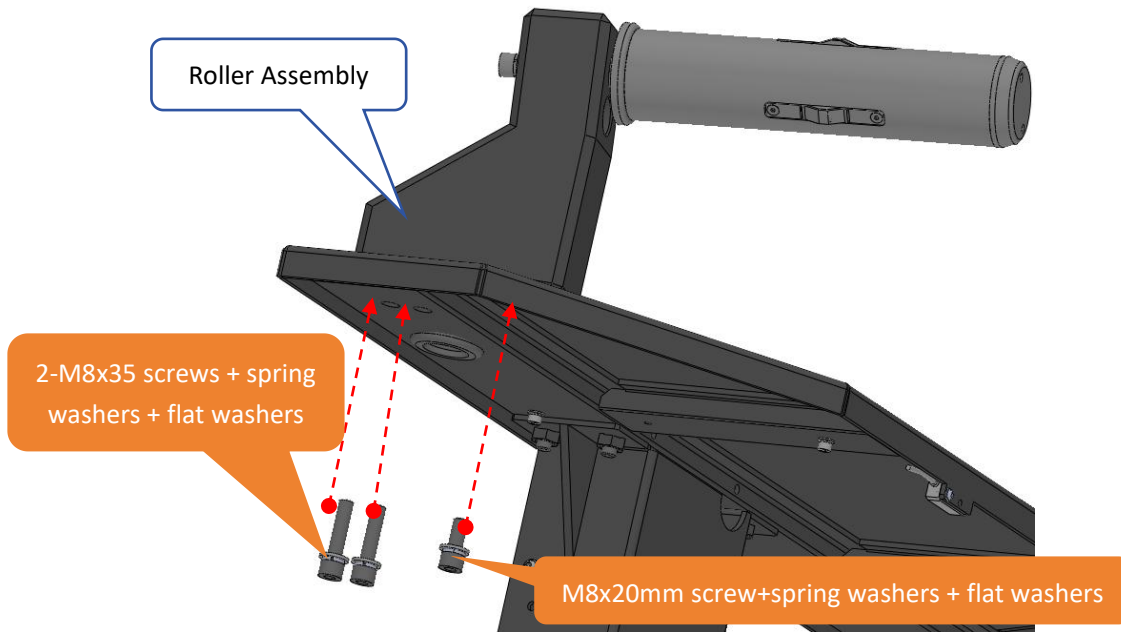
Place the Machine Mounting Base on the Supporting Bar and align the holes.

Install the parts using four M8x20 screws, spring washers and flat washers.



Step 3: Roller Assembly Installation

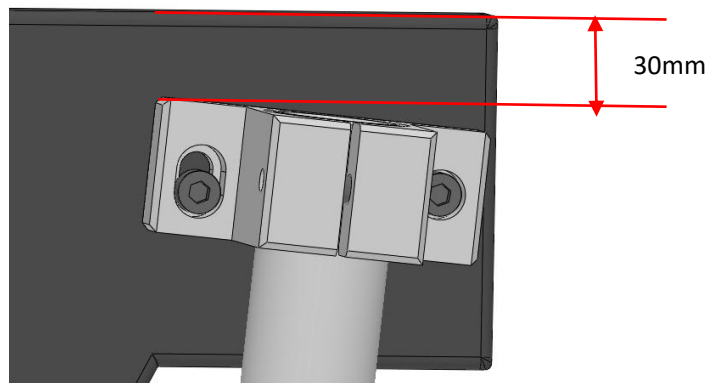
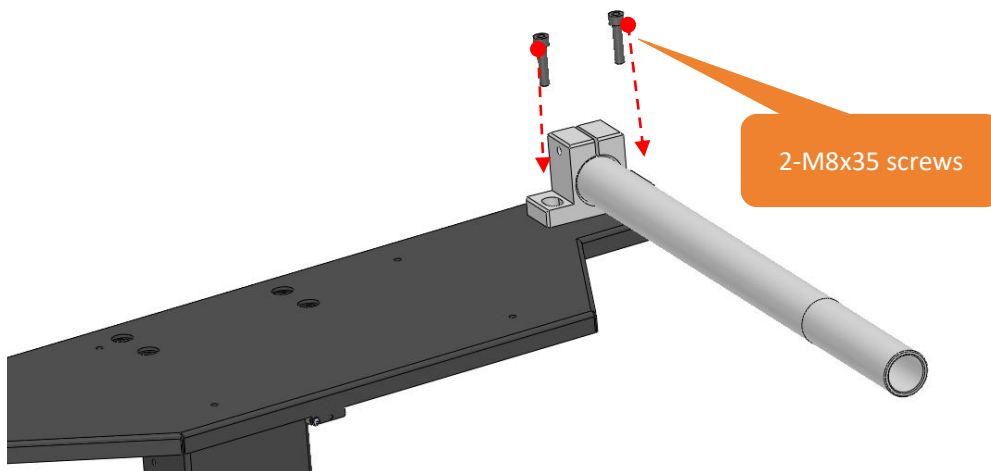
Install the Roller Assembly using three M8 screws, spring washers and flat washers.



Step 4: Film Guide Roll Assembly Installation

Install the Film Guide Roll Assembly using two M8×35 screws.

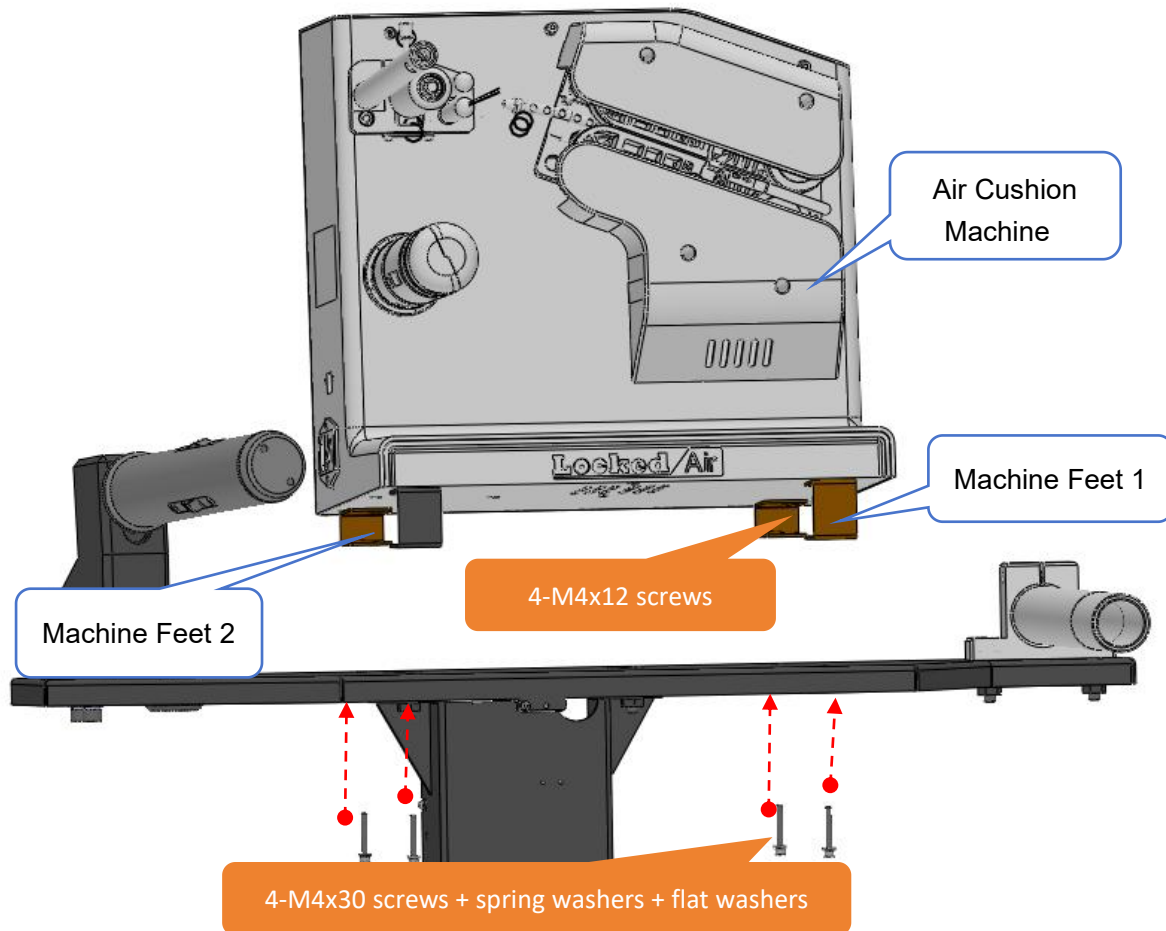
NOTE: Please adjust the position of the Film Guide Roll Assembly as shown in the figure below. The standard distance is 30mm.



Step 5: Air Cushion Machine Mounting

Mount the machine to the feet with four M4×12 screws.

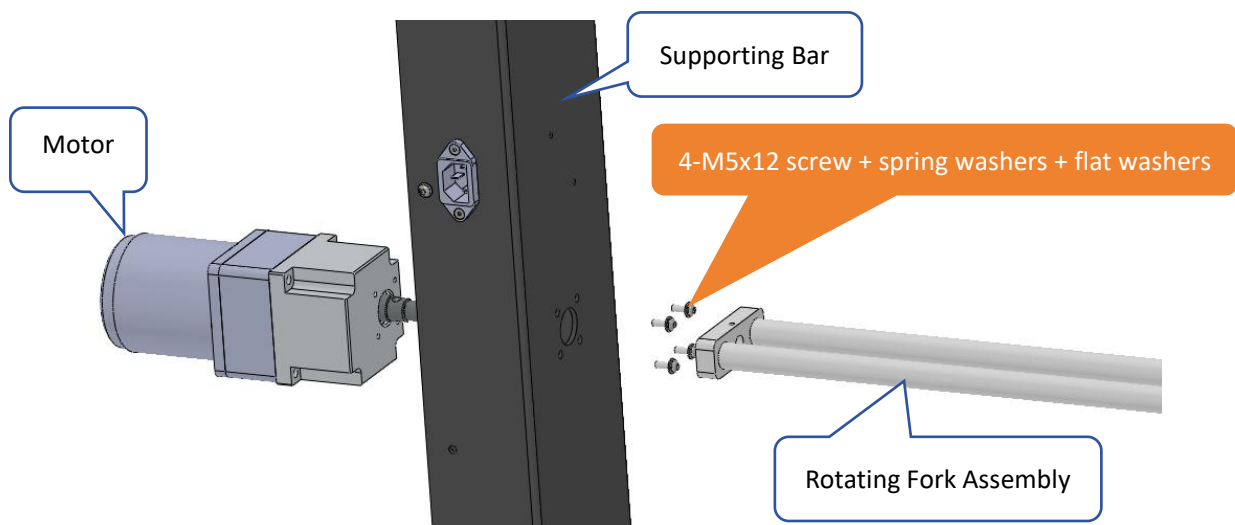
Install the Feet to the base using four M4X30 screws, spring washers and flat washers.



Step 6: Motor & Rotating Fork Assembly Installation

Install the motor to the Supporting Bar using four M5 screws, spring washers and flat washers

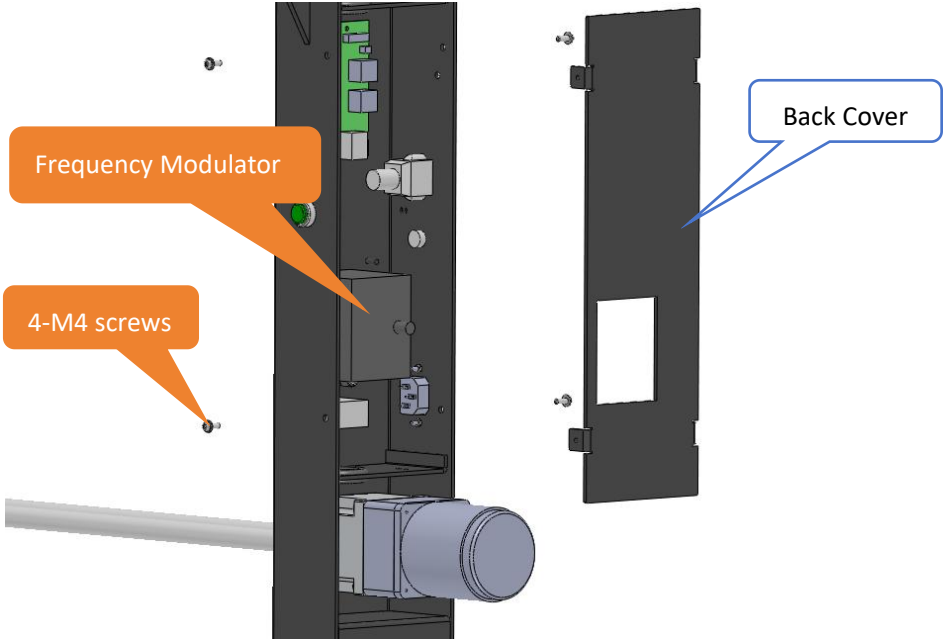
Turn counterclockwise to fasten the Rotating Fork Assembly to the Motor shaft, and tighten the set screw on the fork.



3. Wires Connecting

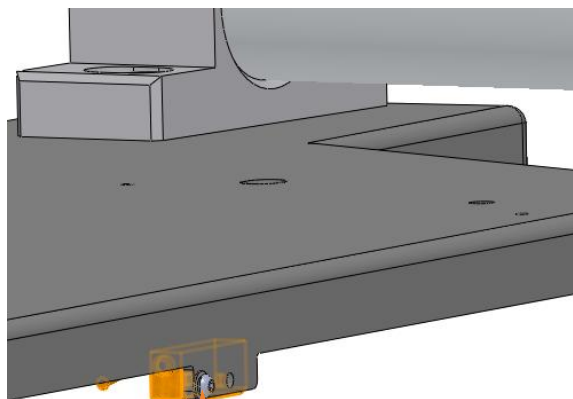
Loosen four M4 screws and remove the Back Cover.

Lead the motor wires to the hole, and connect the wires to U1, U2, Z2 according to the figure below. Reinstall the Back Cover with four M4 screws.

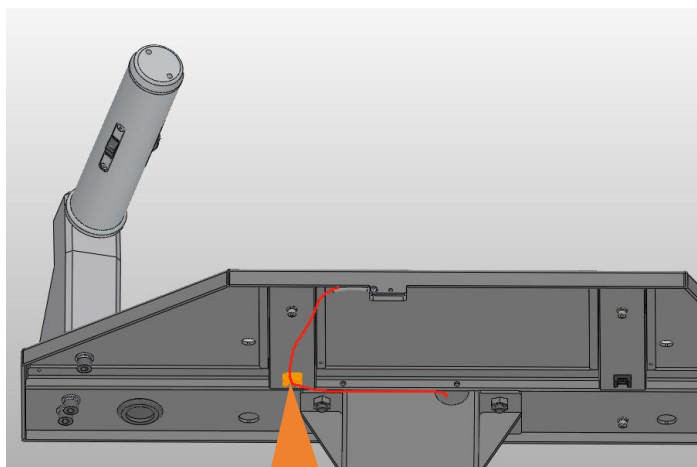


4. Sensor Installation

Install the sensor using M3x12 screw and M3 nut. Route the sensor wires through the cable tie and secure them as shown in the figure below



M3x12 screw + nut



Cable tie