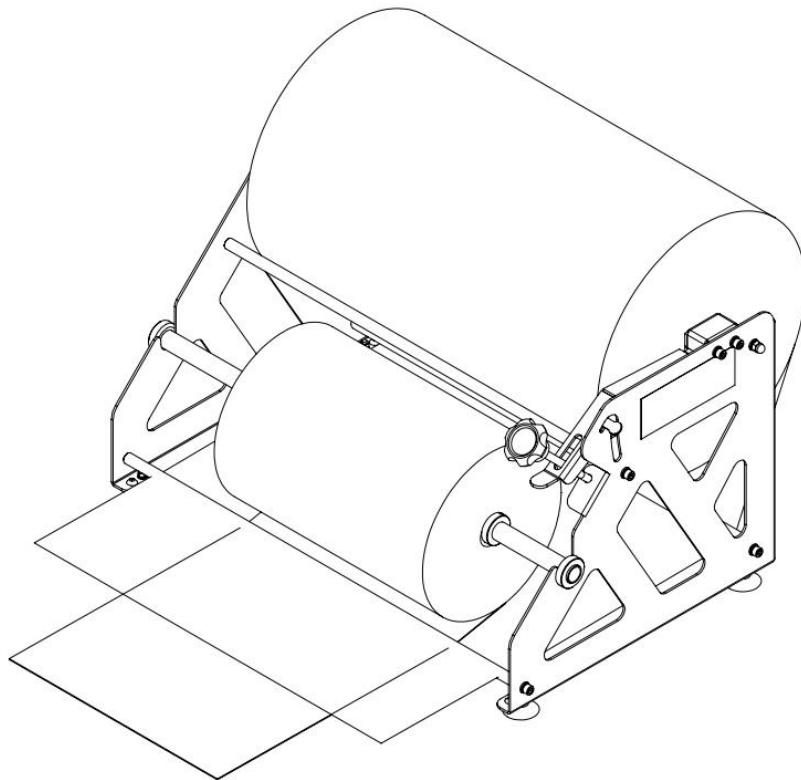




## LP-H1 User Manual



**Hangzhou Bing Jia Tech. Co., Ltd.**

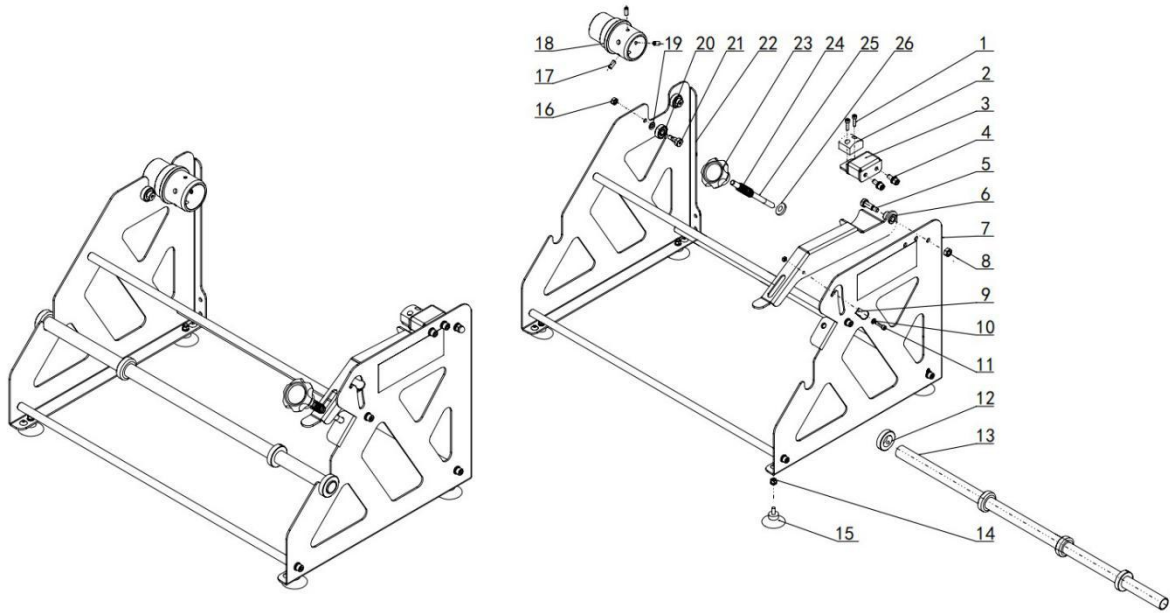
Email: [info@lockedair.com](mailto:info@lockedair.com)

**F1 7, Block 11, China Artificial Intelligence Town(CAIT), Hangzhou 311121,  
P.R.China.**

## Content

<b>1. Part List</b> .....	1
<b>2. Installations and Operation</b> .....	2
2.1 Installations .....	2
2.2 Operation .....	2
<b>3. Paper specifications</b> .....	3
<b>4. Transportation and Storage</b> .....	3
<b>5. Appendix</b> .....	4

# 1. Part List

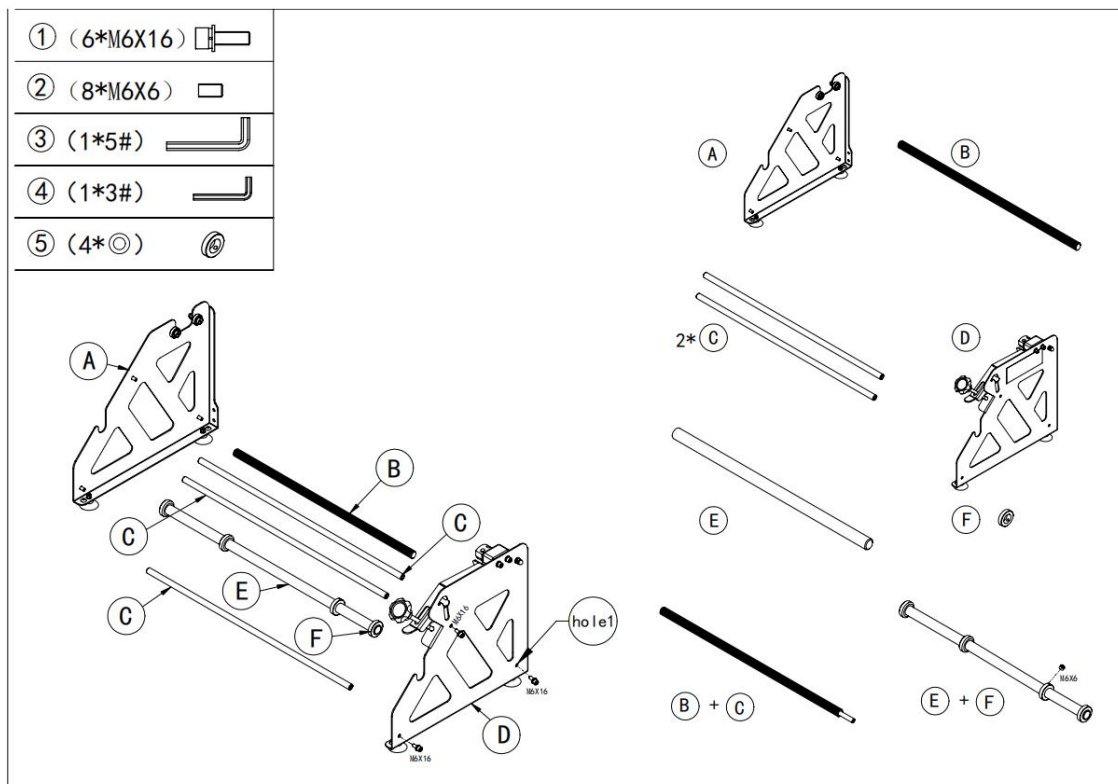


Item	Model	Name	Qty	Item	Model	Name	Qty
1	M4X16	hexagon screw	2	14	M5 galvanized 8.8 grade	hexagon nut	4
2	BJ61-003-000-008	rubber block	1	15	Diameter 40 , M6X15mm foot pad	Suction type foot pad	4
3	BJ61-003-000-007	rubber block	1	16	M6 galvanized nut	cap nut	4
4	M6x16	hexagon screw	2	17	M6X8mm 8.9 level positioning screw	positioning screw	1
5	BJ61-004-000-018	rotation shaft	1	18	BJ61-004-000-005	end cover	1
6	BJ61-003-000-005	paper tensioner	1	19	M8	flat washer	2
7	BJ61-004-000-002	Right side plate	1	20	608-2RB G_T 276	Deep groove ball bearing	2
8	M6	cap nut	1	21	Φ8X8	plug screw	1
9	BJ58-002-000-005	pull ring	1	22	BJ61-004-000-001	left side plate	1
10	4x9	flat washer	1	23	8X50 top wire handwheel	handwheel	1
11	M4x16	hexagon screw	1	24	BJ61-004-000-007	adjusting screw	1
12	FAB22-D20-B10	collar	4	25	SUS304:1.2*12*15*60	compression spring	1
13	BJ61-003-000-003	interleaf paper shaft	1	26	8* 18 galvanized 8.8 grade	flat washer	

## 2. Installations and Operation

### 2.1 Installations

- Put C into B to combine one part-B+C, by using 5# allen wrench and 2\*M6X16 screws to lock B+C's two sides into "hole1" of plate D and as well as corresponding hole of plate A separately;
- Use same 5# allen wrench and 4\* M6X16 screws to lock another remaining two C into hole of plate D and plate A tightly;
- Use 3# allen wrench and 8\*M6X6 screws to fix 4\* collar F on E tightly. According to interleaf paper roll width to decide the distance between two middle collar F( leaving extra more 5mm space for middle two collars F to make sure interleaf paper roll could move on E freely ); Leaving 5mm space between each side plate and collar;
- Finished.



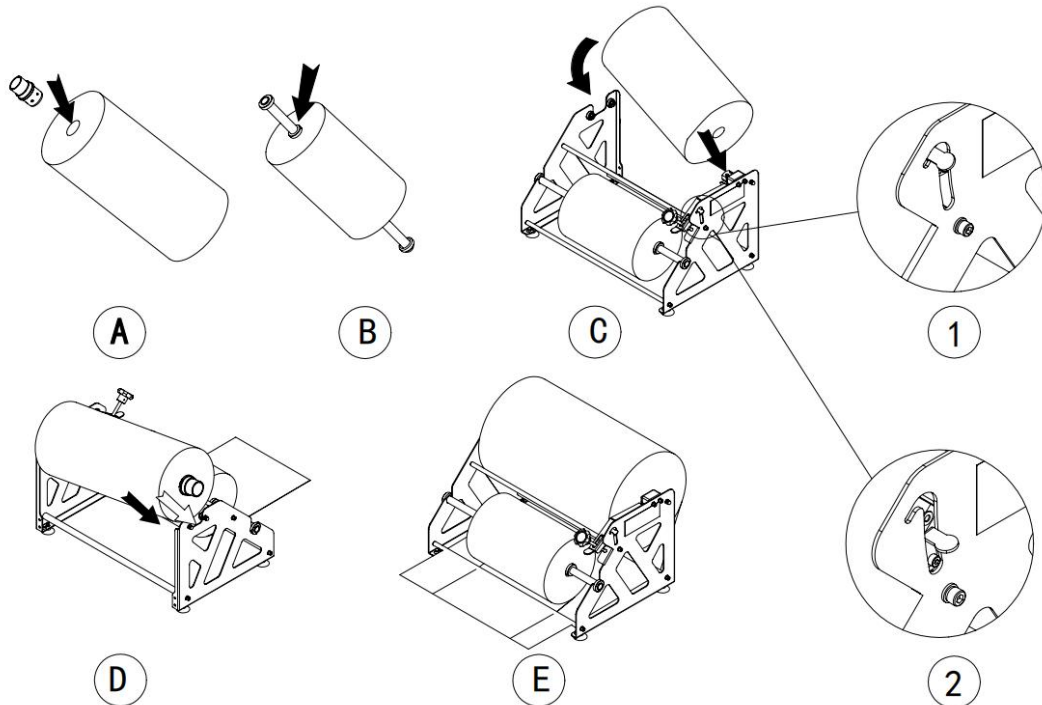
### 2.2 Operation

- Stuff a roller into core of honeycomb paper;
- Load interleaf paper roll on E+F axis;
- Close the damping pull ring (image: serial number 1), hold the paper roll by two hands and slide paper roll right side into the paper tensioning part;

D. Place left side of paper roll gently into plate slot, at this time the bearing could be rotated with paper roll now

E. After finish paper loading, open the damping pull ring. (Image: serial number 2 );

F. Hold E+F axis with interleaf paper roll into each side slot.



### 3. Paper specifications

Honeycomb Kraft Paper:

Weight: 80g/m<sup>2</sup>

Paper Width: 500mm

Diameter: Max 300mm

Interleaf paper diameter: Max 200mm

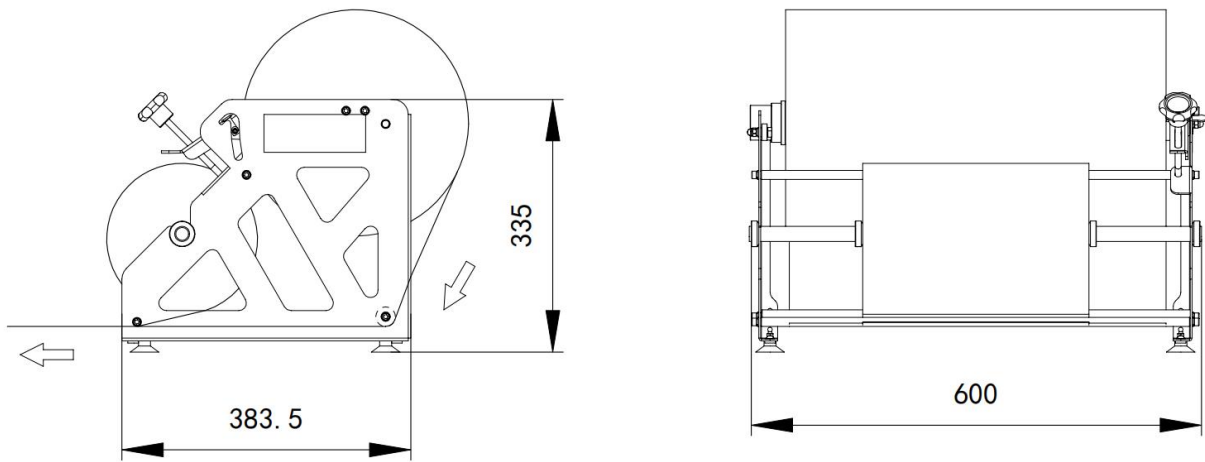
Weight of Paper: 10Kg

### 4. Transportation and Storage

1. There should be no severe vibration or shock during the transportation of the machine;
2. The machine should not be exposed to the sun and rain, and should be stored in an environment with a temperature range of -25~+55 °C ( -13~131°F ) and a relative humidity less

than 90% RH.

## 5. Appendix



Machine size and paper loading path